

Paris, June 28, 2019

Press information

Art and Science program: Inserm at the Rencontres d'Arles and Avignon Festival

Inserm is reaching out to a new audience among the general public this summer by taking part in two events that bring together art and science in a mutually enriching way: the 8th *Recherche de l'art* (Art of Research) exhibition at the Rencontres d'Arles, in partnership with the École nationale supérieure de la photographie, and the 10th edition of the *binôme* program at the Avignon Festival, led by the Les sens des mots theater company.

Inserm is inviting the general public to come and discover a different side to medical research at two arts events in which it is taking part: *La recherche de l'art #8* and the 10th edition of the *binôme* program.

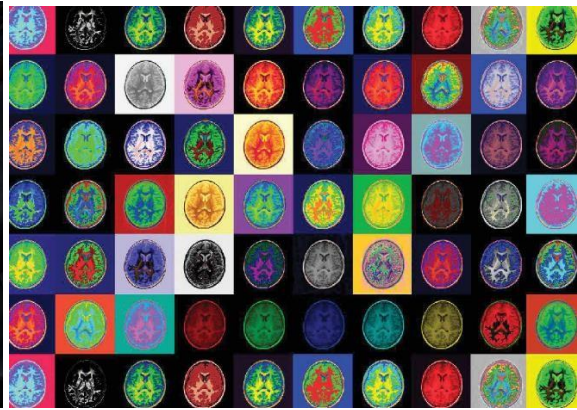
These partnerships look at biomedical research through the lenses of photography and theater, transforming it into artistic material and offering a new vision of science that is accessible to all. To mark these summer events, spread over July and August some of the photographic work on display will also be showcased through the Inserm Instagram account.

La recherche de l'art #8

Since 2011, a partnership between Inserm and the École nationale supérieure de la photographie d'Arles (ENSP) has brought medical research together with photography. Recent ENSP graduates complete a 3 to 4-week photographic residency in an Inserm laboratory, turning it into a center of photographic investigation in which art is used to discover science and present it in a different way. Their work will be shown at the Rencontres d'Arles, culminating in the exhibition *La recherche de l'art #8* and in a publication.



Extract from the installation "III Cœur de
beurre" Direct print on brushed aluminum
©Pauline Rousseau
La recherche de l'art#8



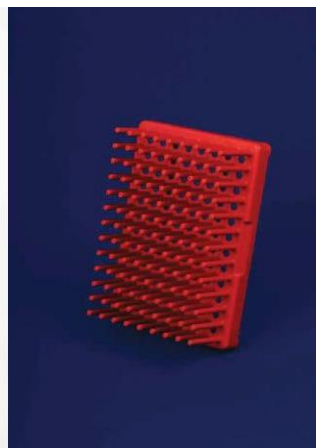
Brainbow
©Hélène Bellenger
La recherche de l'art#8

For the eighth year of the program, Inserm welcomed 4 artists in residence: Hélène Bellenger (in Tours, Unit 1253 Imaging and Brain), Quentin Carrierre (in Dijon, Unit 1093 Cognition, Action and Sensorimotor Plasticity), Diane Hymans (in Nice, Unit 1091, Valrose Institute of Biology), and Pauline Rousseau (in Paris, Unit 970, Center for Cardiovascular Research at the Georges-Pompidou European Hospital). Their work will be exhibited from July 1 to August 25 in the new ENSP building.

Throughout the exhibition, the general public will also be able to discover some of the work via the Inserm Instagram account.



Fœtus
Inkjet print 60 x 90 cm
©Diane Hymans
La recherche de l'art#8



Immeuble en construction
Inkjet print "Building under
Construction) 40 x 60 cm
©Diane Hymans
La recherche de l'art#8



Prince amer de l'écueil (Bitter Prince of the Reef)
Inkjet print on matte paper 120 x 150 cm, mounted on
Dibond, black frame
©Quentin Carrierre
La recherche de l'art#8

Art of Research #8 exhibition

July 1, 2019 to August 25, 2019

Free entry daily from 10 a.m. to 1 p.m. and from 2 p.m.
to 7 p.m. at ENSP

Boulevard Victor Hugo
13 200 Arles

Opening event with the artists in attendance: July 2, 2019 at 5 p.m. Discover the work on the @Inserm Instagram account

For more information: <https://www.ensp-arles.fr/inserm2019>

binôme: 10th edition as part of the "In" program at the Avignon Festival

This year sees theater company *Les sens des mots* presenting its 10th series of *binôme* performances as part of the "In" program at the Avignon Festival. Inserm has partnered with *binôme* from the beginning, helping to develop new visions of science by bringing together the worlds of research and contemporary theater.

binôme consists of a series of performances developed from a meeting and discussion between a researcher and a dramatist. Each meeting results in a piece of theater that is loosely inspired by the encounter, in which the researcher and his or her work becomes the dramatist's subject. The performance combines:

- a screening of extracts from the filmed meeting between the dramatist and the scientist;
- a reading of the play by members of the *Les sens des mots* theater company;
- the filmed reaction of the scientist as he or she sees the play for the first time;
- a public discussion with the dramatist, scientist, and artistic team.

This year, Inserm and *binôme* are inviting the general public to discover *Élise louche!*, a play by dramatist Hédi Tillet de Clermont-Tonnerre based on his meeting with Alain Chédotal, Inserm research director in developmental neurobiology at the Institut de la Vision (Inserm unit 968/CNRS/Sorbonne Université).

The first performance will be held in Avignon on July 15.

Monday July 15 - 5.30 p.m.: *Élise*

louche! Avignon Université - Les Jardins de l'Université 74 rue Louis Pasteur

View the full program of *binôme* performances at the Avignon Festival and book tickets at: <https://www.lessensdesmots.eu>

Les sens des mots press contact:

Valérie Mastrangelo

+33 (0)6 58 11 24 80

valerie.mastrangelo@lessensdesmots.eu

Press contact

presse@inserm.fr



Access the [Inserm press room](#)